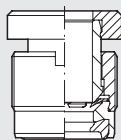




CARTUCHOS Y ACCESORIOS

CARTUCHO DE LATÓN CON ROSCA (R26)

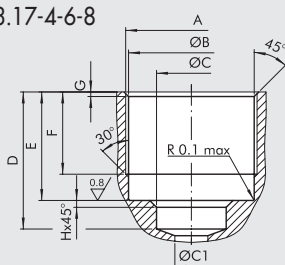


Código	Ref.	Ø	Par de apriete sobre alojamientos de material plástico [Nm]	Par de apriete sobre alojamientos metálicos [Nm]
<b>SERIE R</b>				
2026A02	R26	3	0.6	0.8
2026A01	R26	3.17 ▲	0.6	0.8
2026001	R26	4 ▲	0.8	1
2026002	R26	5	0.8	1.5
2026003	R26	6	0.8	1.2
2026004	R26	8 ▲	1	1.8
2026005	R26	10	0.8	2
2026006	R26	12	0.8	2

▲ Ø3.17 = Ø1/8"; Ø4 = Ø5/32"; Ø8 = Ø5/16"

SEDE CARTUCHO R26

Ø 3-3.17-4-6-8

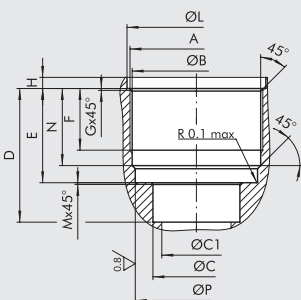


Ø	A	Ø B	Ø C	Ø C1	D	E	F
3-3.17	M7x0.75	6.5 ±0.1	4.5 +0.12 / -0	4 max	10.5 ±0.3	9.5 +0.1 / -0.3	7 ±0.20
4	M9.5x0.75	9 +0.10 / 0	4.1 +0.10 / 0	3 max	12 +0 / -0.20	9.5 +0.15 / -0.05	7.5 ±0.20
6	M11.5x0.75	11 +0.10 / 0	6.1 +0.10 / 0	5 max	12 ±0.1	9.5 ±0.1	7.5 ±0.20
8	M13.5x0.75	13 +0.10 / 0	8.1 +0.10 / 0	7 max	15 +0 / -0.20	10.5 +0.15 / -0.05	8.5 ±0.20

Ø	G	H
3-3.17	0.5	-
4	0.4	0.6
6	0.4	0.6
8	0.4	0.6

Ø 5-10-12

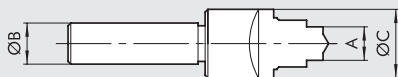


Ø	A	Ø B	Ø C	Ø C1	D	E	F
5	M10.5x0.75	10 +0.1 / 0	5 +0.15 / 0	4 max	11.8 ±0.1	8.9 +0.1 / 0	5.8 +0.3 / -0
10	M15.5x0.75	15 +0.1 / 0	10 +0.15 / 0	9 max	15.6 ±0.1	11 ±0.05	7.5 +0.3 / -0
12	M18x1	17.5 +0.05 / 0.1	12 +0.05 / 0.15	11 max	18 ±0.1	12 ±0.05	6.8 +0.3 / -0

Ø	G	H	Ø L	M	N	Ø P
5	0.3	0.9 +0 / -0.3	11.2 +0.12 / +0.02	0.1	7.8 ±0.05	9.7 ±0.05
10	0.3	1.3 +0 / -0.3	16.2 +0.1 / -0.05	0.2	9 ±0.05	14.9 +0.10 / -0
12	0.6	1.3 +0 / -0.3	18.8 +0.1 / 0	0.2	9.75 +0.1 / -0.15	17 +0.1 / -0

HERRAMIENTA DE PREPARACIÓN ALOJAMIENTO R26



Código	Ref.	A	Ø B	Ø C
2025010	UT.SE. R26 3-3.17	4.5	10	10
2025011	UT.SE. R26 4	4.1	12	18
2025012	UT.SE. R26 5	5.1	15	20
2025013	UT.SE. R26 6	6.1	16	19
2025014	UT.SE. R26 8	8.1	16	21
2025015	UT.SE. R26 10	10.1	16	25
2025016	UT.SE. R26 12	12.1	15	28

MACHO PARA ALOJAMIENTO CARTUCHO R26

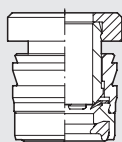


Código	Ref.	Ø	A
2025020	MA R26 3-3.17	3-3.17	M7x0.75
2025021	MA R26 4	4	M9.5x0.75
2025022	MA R26 5	5	M10.5x0.75
2025023	MA R26 6	6	M11.5x0.75
2025024	MA R26 8	8	M13.5x0.75
2025025	MA R26 10	10	M15.5x0.75
2025026	MA R26 12	12	M18x1

CARTUCHOS Y ACCESORIOS

RACORES

**CARTUCHO DE LATÓN DE COMPRESIÓN (R27)**



Código Ref. Ø

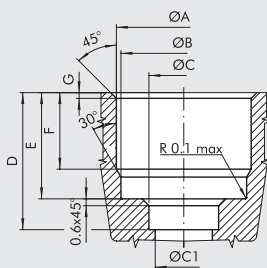
**SERIES R**

2027001	R27	4 ▲
2027002	R27	5
2027003	R27	6
2027004	R27	8 ▲
2027005	R27	10
2027006	R27	12

▲ Ø4 = Ø5/32"; Ø8 = Ø5/16"

**SEDE CARTUCHO R27**

Ø 4-6-8



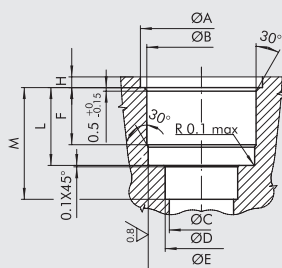
Ø	Ø A	Ø B	Ø C	Ø C1	D	E	F	G
<b>PARA ALUMINIO</b>								
4	9.2 <sup>+0.10</sup> <sub>-0.10</sub>	9 <sup>+0.10</sup> <sub>-0</sub>	4.1 <sup>+0.10</sup> <sub>-0</sub>	3 MAX	12 <sup>+0</sup> <sub>-0.20</sub>	9.3 <sup>+0</sup> <sub>-0.10</sub>	6.7 <sup>+0.10</sup> <sub>-0</sub>	0.5
6	11.3 <sup>+0</sup> <sub>-0.08</sub>	11 <sup>+0.10</sup> <sub>-0</sub>	6.1 <sup>+0.10</sup> <sub>-0</sub>	5 MAX	12 <sup>+0</sup> <sub>-0.20</sub>	9.3 <sup>+0</sup> <sub>-0.10</sub>	6.7 <sup>+0.10</sup> <sub>-0</sub>	0.5
8	13.3 <sup>+0</sup> <sub>-0.08</sub>	13 <sup>+0.10</sup> <sub>-0</sub>	8.1 <sup>+0.10</sup> <sub>-0</sub>	7 MAX	15 <sup>+0</sup> <sub>-0.20</sub>	10.3 <sup>+0</sup> <sub>-0.10</sub>	7.7 <sup>+0.10</sup> <sub>-0</sub>	0.5

**PARA MATERIAL PLÁSTICO**

4	*9.2 <sup>+0</sup> <sub>-0.10</sub>	9 <sup>+0.10</sup> <sub>-0</sub>	4.1 <sup>+0.10</sup> <sub>-0</sub>	3 MAX	12 <sup>-0</sup> <sub>-0.20</sub>	9.3 <sup>+0</sup> <sub>-0.10</sub>	6.7 <sup>+0.10</sup> <sub>-0</sub>	0.5
6	*11.2 <sup>+0</sup> <sub>-0.10</sub>	11 <sup>+0.10</sup> <sub>-0</sub>	6.1 <sup>+0.10</sup> <sub>-0</sub>	5 MAX	12 <sup>-0</sup> <sub>-0.20</sub>	9.3 <sup>+0</sup> <sub>-0.10</sub>	6.7 <sup>+0.10</sup> <sub>-0</sub>	0.5
8	*13.2 <sup>+0</sup> <sub>-0.10</sub>	13 <sup>+0.10</sup> <sub>-0</sub>	8.1 <sup>+0.10</sup> <sub>-0</sub>	7 MAX	15 <sup>-0</sup> <sub>-0.20</sub>	10.3 <sup>+0</sup> <sub>-0.10</sub>	7.7 <sup>+0.10</sup> <sub>-0</sub>	0.5

\* N.B.: el diametro de interferencia es puramente indicativo, dependiendo del tipo de material plastico utilizado y del espesor. Se recomienda realizar pruebas practicas de montaje.

Ø 5-10-12



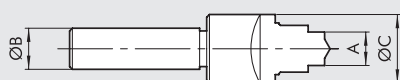
Ø	Ø A	Ø B	Ø C	Ø D	Ø E	F	H	L	M
<b>PARA MATERIAL PLÁSTICO</b>									
5	12.1 <sup>+0.15</sup> <sub>-0</sub>	*10.2 <sup>+0</sup> <sub>-0.10</sub>	4 MAX	5.1 <sup>+0.15</sup> <sub>-0</sub>	9.7 ±0.05	6 <sup>+0.2</sup> <sub>-0</sub>	1.2 <sup>-0</sup> <sub>-0.2</sub>	8.75 <sup>-0</sup> <sub>-0.1</sub>	11.8 ±0.10
10	17.1 <sup>+0.15</sup> <sub>-0</sub>	*15.15 <sup>+0</sup> <sub>-0.08</sub>	9 MAX	10.15 <sup>+0.1</sup> <sub>-0</sub>	14.9 ±0.05	8 <sup>+0.2</sup> <sub>-0</sub>	1.5 <sup>-0</sup> <sub>-0.2</sub>	10.9 <sup>-0</sup> <sub>-0.1</sub>	15.6 ±0.10
12	19.7 <sup>+0.15</sup> <sub>-0</sub>	*17.55 <sup>+0</sup> <sub>-0.08</sub>	11 MAX	12.15 <sup>+0.1</sup> <sub>-0</sub>	17.1 ±0.05	9 <sup>+0.2</sup> <sub>-0</sub>	1.5 <sup>-0</sup> <sub>-0.2</sub>	11.85 <sup>-0</sup> <sub>-0.1</sub>	18 ±0.10

**PARA ALUMINIO**

5	12.1 <sup>+0.15</sup> <sub>-0</sub>	10.3 <sup>+0</sup> <sub>-0.08</sub>	4 MAX	5.1 <sup>+0.15</sup> <sub>-0</sub>	9.7 ±0.05	6 <sup>+0.2</sup> <sub>-0</sub>	1.2 <sup>-0</sup> <sub>-0.2</sub>	8.75 <sup>-0</sup> <sub>-0.1</sub>	11.8 ±0.10
10	17.1 <sup>+0.15</sup> <sub>-0</sub>	15.4 <sup>+0</sup> <sub>-0.08</sub>	9 MAX	10.15 <sup>+0.1</sup> <sub>-0</sub>	14.9 ±0.05	8 <sup>+0.2</sup> <sub>-0</sub>	1.5 <sup>-0</sup> <sub>-0.2</sub>	10.9 <sup>-0</sup> <sub>-0.1</sub>	15.6 ±0.10
12	19.7 <sup>+0.15</sup> <sub>-0</sub>	17.8 <sup>+0</sup> <sub>-0.08</sub>	11 MAX	12.15 <sup>+0.1</sup> <sub>-0</sub>	17.1 ±0.05	9 <sup>+0.2</sup> <sub>-0</sub>	1.5 <sup>-0</sup> <sub>-0.2</sub>	11.85 <sup>-0</sup> <sub>-0.1</sub>	18 ±0.10

\* N.B.: el diametro de interferencia es puramente indicativo, dependiendo del tipo de material plastico utilizado y del espesor. Se recomienda realizar pruebas practicas de montaje.

**HERRAMIENTA DE PREPARACIÓN ALOJAMIENTO R27**



Código Ref. A Ø B Ø C

**PARA ALUMINIO**

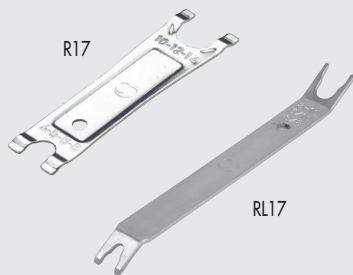
2027021	UT.SE. R27 AL. 4	4.1	10	11.5
2027022	UT.SE. R27 AL. 5	5.1	12	16
2027023	UT.SE. R27 AL. 6	6.1	12	13.5
2027024	UT.SE. R27 AL. 8	8.1	12	15.5
2027025	UT.SE. R27 AL. 10	10.1	16	20
2027026	UT.SE. R27 AL. 12	12.1	16	22

**PARA MATERIAL PLÁSTICAS**

2027011	UT.SE. R27 P. 4	4.1	10	11.5
2027012	UT.SE. R27 P. 5	5.1	12	16
2027013	UT.SE. R27 P. 6	6.1	12	13.5
2027014	UT.SE. R27 P. 8	8.1	12	15.5
2027015	UT.SE. R27 P. 10	10.1	16	20
2027016	UT.SE. R27 P. 12	12.1	16	22

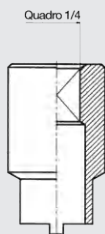


R17 - LLAVE DE DESMONTAJE



Código	Ref.	Lunghezza [mm]	Ø Tubo
2L17001	RL17	140	de 3 a 10
2017001	R17	95.0	de 4 a 14

R41 - LLAVE PARA CARTUCHO R26



Código	Ref.	Ø
2041001	R41	4
2041002	R41	5
2041003	R41	6
2041004	R41	8
2041005	R41	10
2041006	R41	12

NOTAS